

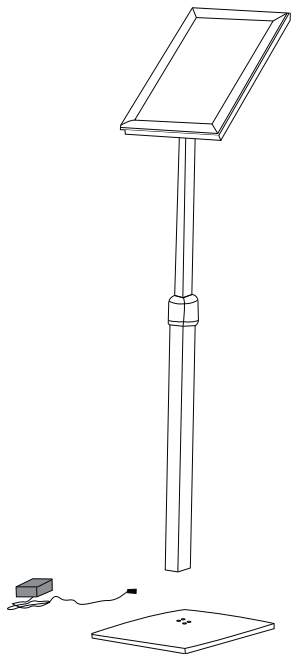
1. GRAPHIC + ANTIREFLECTION PROTECTOR PLACEMENT



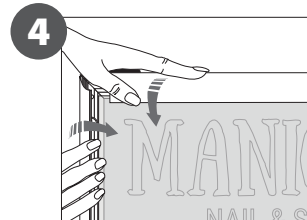
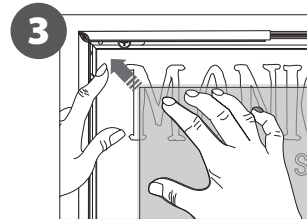
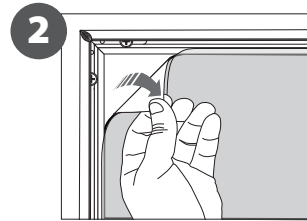
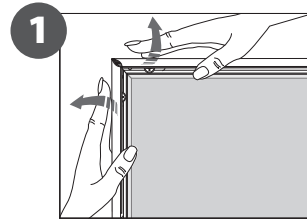
CONTENT

Open and check the content of the boxes and take out all the pieces carefully.

For setting-up frame, you must place its graphics (supplied separately) to the Click Frame following the next steps. Screws and antireflection protector are included.



GRAPHIC ATTACHMENT BY CLICK FRAME



2. SET UP FRAME STRUCTURE

